

Premium Kettle Barbecues

weber 

People fall in love with Weber®

2011-12



www.weberbbq.com.au

Weber® Kettle Barbecues



*The Weber kettle:
Australia's roasting wonder!*

In the pursuit of culinary 'perfection' some people spend 5, 10, even 15 thousand dollars trying to find the very best cooking equipment. Electric, gas or microwave, when they get it home they discover something amazing. They discover there's no cooking appliance in the world that can produce a roast to go anywhere near the outstanding flavour and juiciness of a good old 'Weber barbecue roast'.

Over 50 years old
and still going strong.

It's hard to believe the Weber kettle was invented over 50 years ago. There doesn't seem to be any end to its popularity; its sales come in waves and recently have been escalating again. More and more children of the original Weber kettle pioneers are re-discovering, in fact demanding, the magic of Weber kettle cooking.



The Weber kettle flavour you just can't get any other way.

Australians, in search of complete outdoor cooking mastery, have voted with their feet. They now have a modern gas barbecue for everyday cooking and a Weber kettle for 'serious'

barbecue occasions when the quality of food is everything. Word of mouth has seen over a million Weber kettles sold in Australia so far and all because Weber-cooked hams, roasts and poultry have astounded guests with a delicious flavour that you

just can't get any other way.

The Australian Barbecue Icon.
Why is this so?

We know that our kettle has changed Australian attitudes towards barbecuing forever. Back in the 1970s and 80s it was our



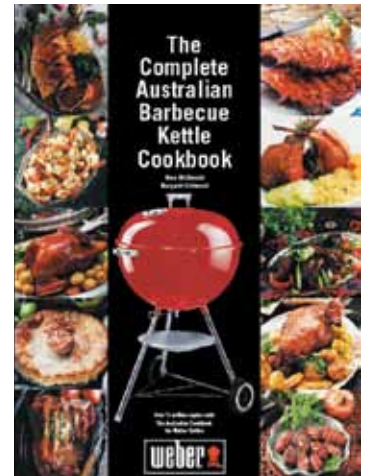
People fall in love with Weber®



this 'indirect cooking' because the food is cooked using natural convection without any fire directly underneath it. Apart from the unforgettable flavour, the great advantage of using this method of cooking is that you don't even have to turn the meat. Your barbecue cooks the most extraordinary roast, every-time, all by itself.

Top selling cookbook ensures Weber kettle mastery.

For nearly 20 years we've recommended that our kettle owners buy 'The Complete Australian Barbecue Kettle Cookbook'. We know it ensures that you will become a master Weber kettle chef. That's why these days, not only do we recommend the book, we include it with all of our 57cm kettles. It's our guarantee of your success. It is a remarkable hard-bound cookbook (224 pages, 200 colour photographs, over 400 recipes, complete with useful barbecue tips and troubleshooting). We think there's probably no better product hand-book in the world. * View independent review at www.bbqblue.com.au



www.weberbbq.com.au

kettle and its indirect cooking system that first allowed ordinary Australians to roast whole joints of meat outdoors. Even now, the incredible flavour of these barbecue roasts still distinguishes our kettle from all the other barbecues sold

in this country. That's why so many Weber kettles have been sold and that's why it's the only barbecue in Australia to ever attain icon status. Everyone agrees that it's synonymous with spectacular food and memorable entertaining.

Indirect cooking: how it works.

We use two fires instead of one (picture below). The fat from the turkey will drop into the disposable drip tray below. This means that you get much healthier, fat-free roasts, without any flare-ups. We call



Weber® Kettle Family Barbecues



The Weber® Compact™ kettle.

The Compact kettle is Weber's basic barbecue kettle, built for people who have a limited budget. The legs and handles are bolted to the bowl rather than welded. It is not fitted with Weber's patented One-Touch™ cleaning system and therefore cannot be fitted with the Weber gas burner system.

It is fitted with one bolt-on handle at the front of the barbecue.



The Weber® One-Touch™ Silver.

This is the Weber kettle that everyone knows; it's the most popular model sold in Australia. The handles and leg couplings are welded to the barbecue (not bolted) before being sealed in porcelain enamel.

This kettle is fitted with Weber's patented One-Touch cleaning system manufactured in non-rust aluminium. This cleaning system operates by simply moving the lever backwards and forwards to remove ashes

and sweep them into the ash catcher. It is fitted with one welded handle at the front of the barbecue. This kettle can be fitted with Weber's unique gas burner system.

The One-Touch Silver Premium.

The One-Touch Silver Premium has all of the features of the One-Touch Silver plus a lid thermometer that monitors the cooking temperature inside the kettle.



The Weber® One-Touch™ Gold.

The One-Touch Gold has all the features that made the One-Touch Silver world famous but instead of an open ash catcher it features a special high capacity saucepan-like container that traps the ashes. The 'Gold' One-Touch cleaning system has already been assembled in the factory and it's made from premium grade stainless steel. For those people who need to move their barbecue up or down steps, the One-Touch Gold is fitted with an extra handle at the back to make lifting easier.

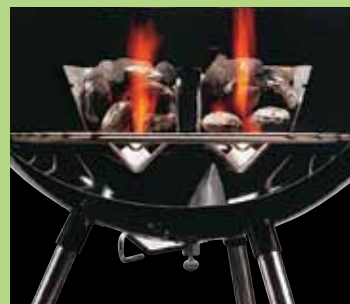
The One-Touch Gold Premium.

The One-Touch Gold Premium is the top of the range free-standing kettle. It has all of the features of the One-Touch Gold

Lighting a Weber® Kettle is as easy as 1, 2, 3.



1. Fill the baskets with fuel and light the firelighters



2. Move the baskets over the firelighters



3. When the fuel is ready, move the baskets out to the sides and get ready to cook.



“Weekends are for relaxing and that’s when I let my Weber kettle do the cooking”



plus a lid thermometer and Tuck-Away lid holder. The thermometer in the lid monitors the cooking temperature inside the kettle and the Tuck-Away lid holder allows the lid to slide back and out of the way when accessing your roast. It is fitted with one welded handle at the front of the barbecue.

The Weber® Performer™.

The ultimate Weber kettle is the

Performer with Touch-N-Go™ ignition. This enables outdoor chefs to light their charcoal fuel using gas. Instead of using firelighters, a gas burner is located directly under the fuel. You only need to run the gas burner for 10 minutes to ignite the fuel. The barbecue will be ready to cook on in a further 25 to 30 minutes. The Performer’s lid thermometer monitors the cooking temperature inside the kettle.



The convenient work surface is made of heat resistant thermo-set resin.

Underneath is a pull-out storage bin for items such as smoking woods or charcoal.

The Performer also features a Tuck-Away lid holder that allows the lid to slide back and out of the way when accessing your roast.

The Weber Performer is the ultimate 57cm charcoal kettle.



Weber® Kettle Family Barbecues

Premium Weber® kettle barbecues.

Weber Specialist dealers have more Weber charcoal barbecues than anyone. They have Weber charcoal barbecues with features you won't see anywhere else. The Weber One-Touch Silver Premium comes with a lid thermometer to measure the cooking temperature inside the kettle. The magnificent Weber One-Touch Gold Premium has a lid thermometer, large 20cm wheels and Tuck-away lid holder. Such features would normally only be available on the Weber Performer.



Features	Weber® Compact Kettle	Weber® One-Touch™ Silver
Porcelain-enamelled bowl and lid	•	•
No-rust aluminium vents	•	•
Aluminised-steel One-Touch™ cleaning system		•
Factory-assembled stainless steel One-Touch™ cleaning system		
Removable no-rust aluminium ash catcher	•	•
Removable high-capacity ash catcher		
Triple-nickel-plated hinged cooking grill	•	•
Molded resin nylon handles	•	
Glass-reinforced nylon handles		•
Rapidfire™ charcoal 'V' grate	•	•
2 Char-Basket™ charcoal fuel holders	•	•
Touch-N-Go™ gas ignition system		
Bezel lid thermometer		
Tuck-Away™ lid holder		
Thermoset work table		
Weather-protected Char-Bin™ storage container		
Heavy-duty steel cart frame		
Wire bottom shelf		
3 Tool holders		
Locking castors		
Crack-proof all-weather wheels	•	•
20cm Crack-proof all-weather wheels		
2 Aluminium drip pans	•	•
Weber® 5-year limited warranty	•	•
Weber® 10-year limited warranty		•
Kettle Cookbook	•	•
Recommended Retail Prices	57cm Black: \$199.00	57cm Black: \$299.00 57cm Blue or Green: \$309.00
Optional Extras		
Gas burner system	N/A	\$119.95
Thermoset worktable	N/A	\$99.95
Worktable/kettle cover	N/A	\$69.95
Slide-Aside™ lid holder	\$44.95	\$44.95
Vinyl cover	\$24.95	\$24.95
Deluxe cover	\$59.95	\$59.95
30cm grill brush	\$15.95	\$15.95
Kettle rotisserie	\$219.00	\$219.00
Weber® Style™ Digital Thermometer	\$69.95	\$69.95
Direct delivery in capital city metro areas	\$36.30	\$36.30
Delivery & assembly in capital city metro areas	\$66.00	\$66.00
All other areas p.o.a.		
Dimensions		
Size	57cm	57cm
Height	97cm	98cm
Width	63cm	63cm
Depth	57cm	57cm
Cooking area	2550cm ²	2550cm ²
Colours		
Black	K61597	K741024
Green		K747024
Blue		K748024

Weber® Portable Kettle Barbecues



www.weberbbq.com.au



Wherever you want to barbecue, whenever you want to barbecue - with that great Weber flavour. That's the idea behind Weber's range of portable charcoal barbecues.

The Smokey Joe®.

The Smokey Joe is a miniature version of the famous Weber kettle. The ideal first barbecue for teenagers or young adults ... people on the move, people having fun. Incredibly, this cute little barbecue has nearly 1,000cm² of cooking area ... just perfect for two or three people. A beautiful porcelain enamelled finish prevents rust and makes cleaning easy too. The Smokey



Joe comes with Weber's 10 year limited warranty.

The Weber® Go-Anywhere™.

The ultimate in hibachi-style cooking, providing perfectly grilled steaks or satays over glowing charcoal. Unlike traditional hibachis, the lid enables you to smoke fish and can also be angled to act as a windbreak.

The Weber Go-Anywhere has legs that fold up to hold the lid in place when carrying.

A beautiful porcelain enamelled finish prevents rust and makes cleaning easy too. Built to last, it comes with Weber's 10 year limited warranty.

The Weber Go-Anywhere is the ultimate in hibachi-style cooking.



Features	Smokey Joe®	Go-Anywhere™
Porcelain-enamelled bowl and lid	•	•
Triple-nickel-plated cooking grill	•	•
Nickel-plated lid lock for carrying		•
Lid can be used as wind break		•
Glass-reinforced nylon handle(s)	•	•
No-rust aluminium vents	•	•
Ash catcher	•	
Full-colour Australian owners handbook	•	•
Weber® 10 year limited warranty	•	•
Recommended Retail Price	\$99.95	\$119.95
Optional Extras		
Direct delivery in capital city metro areas.	\$36.30	\$36.30
All other areas p.o.a.		
Dimensions		
Height	43cm	37cm
Width	36cm	53cm
Depth	37cm	31cm
Cooking area	960cm ²	1040cm ²
Colour		
Black	K10024	K121024



Weber® Speciality Kettle Barbecues



www.weberbbq.com.au



Weber® Ranch™

The legendary Weber Ranch is the largest barbecue kettle in the world. This kettle will cook for the biggest family or is the ideal investment and profit earner for clubs and caterers. With 6900cm² of cooking area, the Ranch cooks crowd-pleasing feasts with the magnificent Weber flavour.

Come rain, hail or shine, the Ranch will cook a whole lamb in just under two hours. The ash catcher is made of heavy-gauge, porcelain-coated steel and can be lifted out for easy ash disposal and cleaning.

Weber® Smokey Mountain Cooker™

If you want to get serious about smoking, you'll love Weber's Smokey Mountain Cooker. Inside, a porcelain-enamelled water pan generates steam to keep the cooking temperature low and even. As a result, the foods are tender, succulent and moist. Smouldering smoke combines with the steam and filters up through the double racks, encircling hams, fish, poultry or sausage to produce beautiful flavours. The Smokey Mountain Cooker is perfect for home-made bacon. The smoker is made from heavy gauge steel sealed in porcelain enamel that won't peel, stain or burn. The cookbook includes an easy reference smoker cooking chart and all the information you need to get you started. Also included with the Smokey Mountain Cooker is a premium quality vinyl cover.



Features	Smokey Mountain Cooker™	Ranch™
Porcelain-enamelled bowl and lid	•	•
No-rust aluminium vent	•	
Removable ash catcher		•
2 Triple-nickel-plated cooking grills	•	
Rust-resistant front loading door	•	
Glass-reinforced nylon handle(s)	•	•
Porcelain-enamelled water pan	•	
Two 47cm-diameter cooking areas	•	
Fixed commercial-grade thermometer	•	
Triple-nickel-plated hinged cooking grill		•
Tuck-Away™ lid holder		•
4 Charcoal baskets		•
Heavy-duty steel frame		•
3 Tool holders		•
Crack-proof all-weather wheels		•
Locking castors		•
10 Aluminium drip pans		•
Premium-grade cover	•	
Complete Australian Barbecue Kettle Cookbook		•
Handbook	•	
Weber® 10-year limited warranty	•	•
Recommended Retail Price	47cm: \$699.00	96cm: \$2299.00
Optional Extras		
Direct delivery in capital city metro areas.	\$36.30	
All other areas p.o.a.		
Delivery and assembly in capital city metro areas.	\$66.00	included
All other areas p.o.a.		
Dimensions		
Height	104cm	107cm
Width	48cm	96cm
Depth	48cm	114cm
Cooking area	3470cm ²	6900cm ²
Colours		
Black	K721001	K60020



Weber® Charcoal Barbecue Accessories

Weber make a full range of innovative well-made accessories that perfectly complement any Weber charcoal barbecue and add fun, ease and convenience to charcoal cooking.



Kettle Rotisserie.

Delicious spit-roasted food is easy with a Weber rotisserie. Designed for the Weber range of 57cm kettle barbecues, it features a heavy duty electric motor with a wooden handle and counter balance for smooth turning.

8493 RRP \$219.00.



Weber Wok.

The stainless-steel wok is a fabulous accessory for your Weber kettle. It's all action. You can cook the largest of stir-fries or even deep fry fish and chips for a crowd. It comes with cooking instructions and Weber's favourite stir-fry recipes.

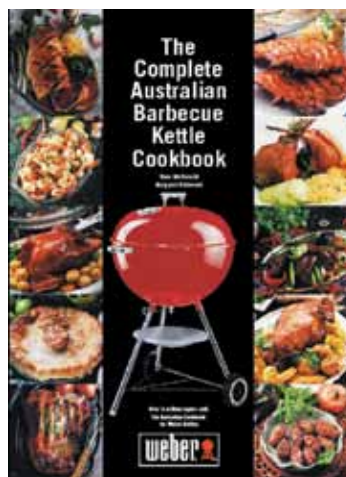
8412 RRP \$99.95.



Thermoset Side Table.

Perfect for that extra work-space. Fits 57cm kettles (except the Compact & Gold Premium kettle).

7412 RRP \$99.95



Australian Barbecue Kettle Cookbook.

This beautiful Australian barbecue cookbook is hard bound, has 224 pages, 200 colour photographs and over 400 recipes. You can buy this book with confidence, either as a gift for a friend or for your own enjoyment.

240-10. RRP \$44.95.



Grill and Tool Holder.

Keep tools within easy reach with this neat little tool holder. Hang your cooking grill here when lighting your kettle. Fits 57cm kettles.

6431 RRP \$23.95.



Slide-Aside™

The Weber Slide-Aside™ stainless steel lid holder clips over the lip of your barbecue bowl. No more putting your kettle lid on the ground. Simply slide it aside when you want to get to the food. The Slide-Aside is made of high grade stainless steel and it fits 57cm kettles.

8411 RRP \$44.95.



Charcoal Kettle Hotplate.

Ideal for cooking eggs, bacon, onion rings or pancakes.

93345 RRP \$39.95.



Weber Non-Stick Breakfast Plate Sheet.

Makes your Breakfast Plate as easy to clean as a non-stick frying pan.

93325 RRP \$19.95.



Gas Burner System.

Roast, bake or smoke in your barbecue kettle with gas. This system comes with a stainless steel burner and two heat settings to achieve similar temperatures to charcoal cooking. The Weber gas kit will only fit 57cm 'One-Touch' kettles and is only for indirect gas cooking (cannot be used with charcoal). Comes with a hose and regulator and 5 year warranty.

8506 RRP \$119.95.



Standard Cover.

This standard vinyl cover helps keep your Weber barbecue kettle clean and protected from dirt and dust when stored in the shed.

7451 RRP \$24.95.



Premium Covers.

Want to leave your Weber barbecue outside? Protect it with a premium cover. This high quality cover is made of heavy-duty vinyl that will resist cracking for years outside.

57cm kettle RRP\$59.95.

7453 Performer™ (post 2005) RRP \$94.95.

7454 Work Table Cover RRP \$69.95.

Weber Style™ Barbecue Tools.
 The latest design in barbecue tools. Each will perform its specific task with ease. Their handles have built-in comfort grips that give perfect balance ... the moment you pick one of them up you can feel the difference.

Firespice™ Smoking Woods
 Enjoy the full flavour of smoked hams, poultry and fish with hickory, the world's most popular smoking wood. Available in both chunks for charcoal barbecues and chips for gas barbecues. You just can't beat the flavour!
 Hickory Chunks 2.27kg.
 17056 RRP \$14.95.
 Hickory Chips 1.35kg.
 17053 RRP \$11.95.



Stainless Steel Tool Set.
 Comprises tongs, spatula and barbecue fork.
 6445 RRP \$69.95.



Stainless Steel Chef's Tongs.
 6441 RRP \$22.95.

Stainless Steel Skewer Set.
 Rectangular rather than round, these skewers are designed to hold food in place when the skewer is turned. Elegant yet robust, these heavy gauge skewers are perfect for satays and kebabs.
 6437 RRP \$36.95.



Weber® Charcoal Barbecue Accessories

3 Sided Grill Brushes.

These grill brushes feature a round head full of metal bristles, making it easy to get between the grill bars and other difficult places.

Large. 6424 RRP \$22.95.
Small. 6423 RRP \$18.95.



Grill Brush.

This grill brush features a hardwood handle and metal bristles that don't rust or leave rusty residue on the cooking grill. It includes a bar scraper that aids in removing extra stubborn residue from charcoal kettle grills.

6421 RRP \$15.95.



Rib Rack.

The heavy-gauge, nickel-plated steel rib rack allows you to stand ribs, chops and chicken pieces in an upright position. Creates up to 50% more usable cooking area.

6406 RRP \$32.95.



Roast Holder.

Instead of juggling with tongs, the roast holder makes it easy to lift roasts on and off the barbecue. Made of heavy-gauge nickel-plated steel.

6407 RRP \$29.95.



Stainless Steel Roast Holder. Style meets function with this roast holder.

6436 RRP \$69.95.



Stainless Steel Vegetable Basket (below).

Deep enough to let you cook large quantities of your favourite vegetables.

6434 RRP \$44.95.

Stainless Steel Grill Pan (above).

A great idea for cooking oven chips and fries, vegetables or delicate fish on the barbecue.

6435 RRP \$44.95.



Salt and Pepper Shakers. Designed to look like miniature kettles, they are a perfect addition to any barbecue.

32911 RRP \$16.95.



Barbecue Mitt.

Made of 100% cotton material, the mitt has a special flame retardant coating to protect you from the heat of your barbecue.
8401 RRP \$19.95.

Barbecue Apron.

High quality black barbecue apron made from 100% cotton with Weber logo.
8403 RRP \$24.95.

Poultry Roaster.
The poultry roaster is the perfect cooking accessory for all those people who enjoy that extra juicy, flavoursome chicken. The non-stick tray has a reservoir for beer, wine, fruit juice, water or spices. When placed on a barbecue, the steam rising from this mixture helps produce fantastic flavour, cooking the chicken to perfection.

6408 RRP \$59.95.



Drip Pans.

Your choice of small or large heavy-gauge pans especially designed for barbecue use. Made to the highest quality without any sharp edges, these versatile pans can be cleaned and re-used. Suitable for gas or charcoal barbecues either as drip pans or for cooking vegetables.

Small Drip Pans. (10)
6415 RRP \$11.95.
Large Drip Pans. (10)
6416 RRP \$17.95.

**Weber Style™ Barbecue Beeper
Digital Meat Thermometer.**
6438 RRP \$69.95.



Weber Style™

Digital Thermometer.

Roast-meat lovers should all have a barbecue beeper. The digital meat thermometer beeps to let you know when your roast is cooked to your liking. It doesn't even need to be near the barbecue; you can carry it around on your belt or leave it somewhere handy.

Here's how it works.

Suppose you're cooking a roast of tender veal and you like to cook it to medium. Select veal from the meat choices on your digital receiver. Select medium from the cooking options offered. Insert the meat probe into the meat inside your barbecue. Attached to the probe is a cable that leads to a transmitter. The transmitter sends signals to the digital receiver. When the meat is nearly cooked the receiver will beep four times. A short time later, the receiver will give a continuous beep which indicates that your veal is perfectly cooked to medium.

Dealer

Weber-Stephen Products Co. (Aust) Pty. Ltd.
Australian Representative R. McDonald Co. Pty. Ltd.
A.C.N. 007 905 384.
104 South Terrace, Adelaide, South Australia, 5000.
Consumer information phone 1300 301 290 or visit
www.weberbbq.com.au
Wholesale enquiries and orders phone (08) 8221 6111

© 2010 Weber-Stephen Products LLC. (Australia) Pty. Ltd. Trading as Weber® Barbecues, Weber® Barbeques, Weber® Shop and Weber® BBQs. WEBER®, WEBERN®, the Kettle Silhouette device®, the shape of the Weber Kettle®, GENESIS®, SUMMIT® and FLAVORIZER® are registered Australian trade marks.

WEBER® Q™, BABY Q™, the Q™ device are trade marks; all of Weber-Stephen Products LLC, 200 East Daniels Road, Pallatine, Illinois, 60067 USA. The shape of the Weber® Q™ is a registered trade mark of Weber-Stephen Products LLC.

Smokey Joe™, Tuck-N-Carry™, Go-Anywhere™, Compact™, Bar-B-kettle™, One-Touch™, Master-Touch™, Platinum™, Performer™, Touch-N-Go™, Smokey Mountain Cooker™, Ranch™, Slide-aside™, Weber Wok™, Rapidfire™, Char-Basket™, Charbin™, Tuck-away™, Stopwatch Engineering™, Warm-Up™, Steam-N-Chips™, Gas Catcher™, Spirit™, Crossover™, Spider Stopper™, FlameCheck™, Firespice™, FireStarters™, Snap-Jet™, Weber Flame™, Weber Style™, Grill-Out™ and Backyard Heroes™ are trade marks; all of Weber-Stephen Products LLC, 200 East Daniels Road, Pallatine, Illinois, 60067 USA.

Weber-Stephen Products LLC is the owner of Australian patent numbers 598709, 609849, 641339, 694686 and 769944 relating to various aspects of Weber's products. There are Australian patents pending relating to, among other things, certain aspects of the Weber Q barbecue grill.

Weber-Stephen Products LLC is the owner of Australian Design Registration numbers 129224, 148993 and 300965.

© R. McDonald Co. Pty. Ltd. 2010. This booklet incorporates material which is owned by Weber-Stephen Products LLC, R. McDonald Co. Pty. Ltd. and McDonald-Kirkwood Pty. Ltd.

